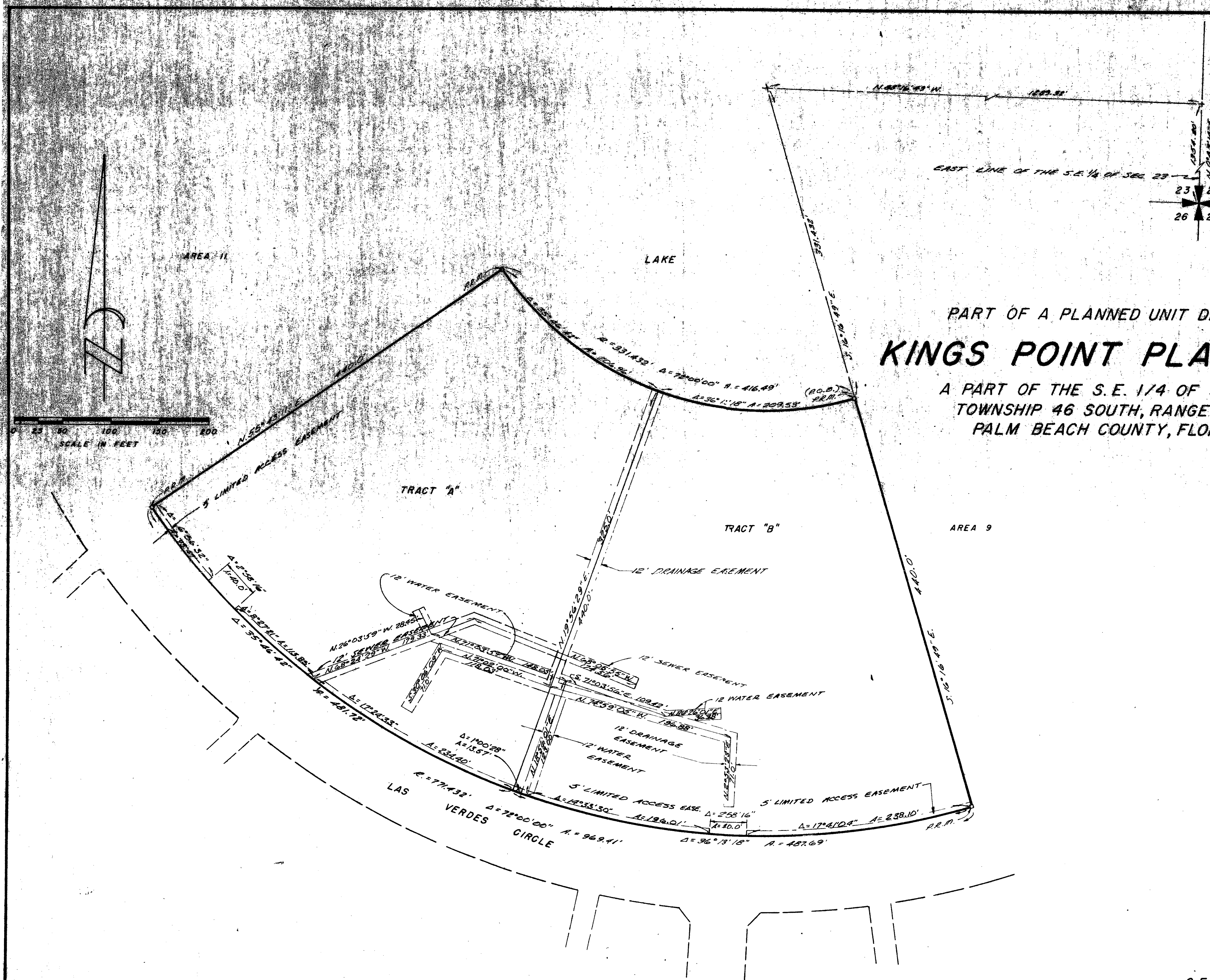


50/104

DRAWING NUMBER

DRAWING NUMBER

DRAWING NUMBER



PART OF A PLANNED UNIT DEVELOPMENT  
**KINGS POINT PLAT NO. NINE**  
 A PART OF THE S.E. 1/4 OF SECTION 23  
 TOWNSHIP 46 SOUTH, RANGE 42 EAST  
 PALM BEACH COUNTY, FLORIDA

See Book

PREPARED BY:  
 E. BRETT CULPEPPER  
 CFS AND ASSOCIATES, INC.  
 CONSULTING ENGINEERS  
 FT. PIERCE, FLORIDA

0263-006

(SHEET 2 OF 2)

Kings Point 50/104